

Sophos Firewall



Powerful Protection and Performance

Sophos Firewall and the dual-processor XGS Series appliances provide the ultimate in SaaS, SD-WAN, and cloud application acceleration, high-performance TLS inspection, and powerful threat protection for the most demanding networks.

Xstream Protection

Sophos Firewall's Xstream Architecture protects your network from the latest threats while accelerating your important SaaS, SD-WAN, and cloud application traffic.

TLS 1.3 Inspection

Remove an enormous blind spot with intelligent TLS inspection that's fast and effective, supporting the latest standards with extensive exceptions and point-and-click policy tools to strike the perfect balance of performance, privacy, and protection.

Deep Packet Inspection

Stop the latest hacks and attacks dead in their tracks with high performance streaming deep packet inspection, including next-gen IPS, web protection, and app control, as well as deep learning and sandboxing powered by SophosLabs Intelix.

Application Acceleration

Accelerate your trusted SaaS, SD-WAN, and cloud traffic such as VoIP, video, and other mission critical applications automatically or via your own policies. Put them on the FastPath through the Xstream Flow Processor to optimize performance and increase headroom for traffic that needs deeper inspection.

Synchronized Security

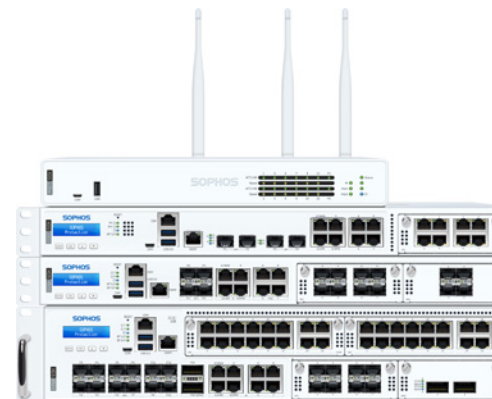
Closely integrated with Sophos Endpoint, our firewall can automatically respond to incidents via Security Heartbeat™. The health status for all your endpoints is in full view, while your Sophos Firewall coordinates an automated, proactive response to isolate any active threat — preventing lateral movement. Security Heartbeat™ also shares user and application identification to improve application discovery. In combination with Sophos Managed Detection and Response, you can tap into the benefits of synchronized security, making remediation faster and easier.

Sophos Central Management and Reporting

Sophos Central is the ultimate cloud management platform. Manage all your firewalls with group policy tools for backup management, scheduled firmware updates, and zero-touch deployment. Take advantage of our powerful cloud-based reporting tools to get deeper insight into your network activity.

Highlights

- ▶ The world's best visibility, protection, and response
- ▶ Flexible deployment: hardware, cloud, virtual, software
- ▶ Integrates with the entire Sophos ecosystem of cybersecurity solutions
- ▶ Unique Synchronized Security with Security Heartbeat™
- ▶ Sophos Central cloud management at no extra charge
- ▶ Rich on-box and cloud-based reporting included
- ▶ Modular connectivity and SD-WAN options



SOPHOS



Managed Security Solutions
Powered by Sophos, delivered by Lingo



Sophos Firewall XGS Series Appliances

Every XGS Series appliance offers a dual processor architecture, with a dedicated Xstream Flow Processor for intelligent acceleration of real-time traffic like VoIP, video, and other trusted applications. The result: Xstream performance at every price point to power the protection you need for today’s diverse, distributed, and encrypted networks.

Model		Tech. Specs			Throughput			
Model	Form Factor	Ports/Slots (Max Ports)	w-model*	Swappable Components	Firewall (Mbps)	IPsec VPN (Mbps)	Threat Protection (Mbps)	Xstream SSL/TLS (Mbps)
XGS 87(w)	Desktop	5/- (5)	Wi-Fi 5	n/a	3,850	3,000	280	375
XGS 107(w)	Desktop	9/- (9)	Wi-Fi 5	2 nd power supply	7,000	4,000	370	420
XGS 116(w)	Desktop	9/1 (9)	Wi-Fi 5	2 nd power supply, 3G/4G, 5G, Wi-Fi**	7,700	4,800	720	650
XGS 126(w)	Desktop	14/1 (14)	Wi-Fi 5	2 nd power supply, 3G/4G, 5G, Wi-Fi**	10,500	5,500	900	800
XGS 136(w)	Desktop	14/1 (14)	Wi-Fi 5	2 nd power supply, 3G/4G, 5G, Wi-Fi**	11,500	6,350	1,000	950
XGS 2100	1U	10/1 (18)	n/a	Optional external power	30,000	17,000	1,250	1,100
XGS 2300	1U	10/1 (18)	n/a	Optional external power	39,000	20,500	1,500	1,450
XGS 3100	1U	12/1 (20)	n/a	Optional external power	47,000	25,500	2,000	2,470
XGS 3300	1U	12/1 (20)	n/a	Optional external power	58,000	31,100	3,000	3,130
XGS 4300	1U	12/2 (28)	n/a	Optional external power	75,000	62,500	6,500	8,000
XGS 4500	1U	12/2 (28)	n/a	Optional internal power	80,000	75,550	8,650	10,600
XGS 5500	2U	16/3 (48)	n/a	Power, SSD, Fan	100,000	92,500	14,000	13,500
XGS 6500	2U	20/4 (68)	n/a	Power, SSD, Fan	120,000	109,800	17,850	16,000
XGS 7500	2U	22/4 (70)	n/a	Power, SSD, Fan	160,000	117,000	26,000	19,500
XGS 8500	2U	22/4 (70)	n/a	Power, SSD, Fan	190,000	141,000	34,000	24,000

* 802.11ac

** 2nd Wi-Fi module option for XGS 116w, 126w and 136w only

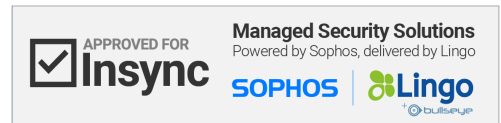
Xstream Protection Bundle

Sophos Firewall’s Xstream Protection Bundle provides all the next-gen protection, performance, and value you need to power the most demanding network.

- **Base License**
 - Networking, wireless, Xstream architecture and SD-WAN, unlimited remote access VPN, site-to-site VPN, reporting
- **Network Protection**
 - Xstream TLS and DPI engine, IPS, ATP, Security Heartbeat™, SD-RED VPN, reporting
- **Web Protection**
 - Xstream TLS and DPI engine, web security and control, application control, reporting
- **Zero-Day Protection**
 - Machine learning and sandboxing file analysis, reporting
- **Central Orchestration**
 - SD-WAN VPN orchestration, Central Firewall Reporting Advanced (30-days), MTR/XDR-ready
- **Enhanced Support**
 - 24/7 support, feature updates, advanced replacement hardware warranty for term

For Performance Testing methodology see sophos.com/compare-xgs

For access layer switches see sophos.com/switch



United Kingdom and Worldwide Sales
 Tel: +44 (0)8447 671131
 Email: sales@sophos.com

North American Sales
 Toll Free: 1-866-866-2802
 Email: nasales@sophos.com

Australia and New Zealand Sales
 Tel: +61 2 9409 9100
 Email: sales@sophos.com.au

Asia Sales
 Tel: +65 62244168
 Email: salesasia@sophos.com